



CAD and Technical Drawings



Image Enhancement

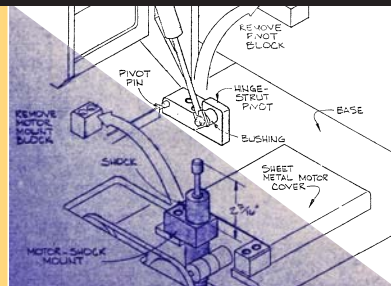


Image Restoration



Archived Blueprints

Colortrac SmartLF Ci 40

Professional SmartLF Scanning Solutions for:

ARCHITECTS | ENGINEERS | CONSTRUCTION | GIS | BUILDING SERVICES
FACILITIES MANAGEMENT | TECHNICAL & CAD DRAWING OFFICES



- ▶ 600dpi optical with 9600 maximum resolution
- ▶ 40" image width –suits A0, E and architectural E-size scans
- ▶ Walk-up scanning and copying from intuitive touchpad
- ▶ Instant productivity from power-on, no warm-up, no waiting
- ▶ Intuitive face-up paper feed with automatic size detection
- ▶ Convenient front document exit for easy retrieval
- ▶ High productivity scan speeds with excellent image quality
- ▶ Designed to comply with international energy saving regulations
- ▶ Easy Plug 'n Play set-up with high speed USB 2.0
- ▶ Network-ready –Gigabit ethernet connectivity
- ▶ ENERGY STAR® qualified - powers down when idle
- ▶ SmartLF All-in-One Scan and Copy software included
- ▶ Compact, lightweight, transportable
- ▶ Affordable value for money!

The 4th generation SmartLF Ci40 is a fast, accurate and affordable 40" technical document scanner offering easy, face-up, instant-on, walk-up scanning and copying to any workstation or printer across a network.

The SmartLF Ci 40 walk-up scanner offers professional A0 or Architectural E-size scan and print productivity at the touch of a button. Supplied with SmartLF All-in-One monochrome, grayscale or color scan and copy software, you can quickly and easily scan to file, email (PDF) or any printer. Its high definition optical resolution will capture the finest details of all your technical drawings and maps with an unrivalled combination of sharpness, accuracy and bright colours.



Colortrac
Our Business is Your Image



SmartLF Ci40 with floor stand.

The new generation of **SmartLF Ci 40** large format technical document scanners are affordable 40" wide ENERGY STAR qualified CIS devices offering high quality imaging performance, 600 dpi optical resolution, Ethernet connectivity and instant-on LED long-life illumination.

Ideal for AEC, CAD and GIS technical documents and office color graphics, photographs, maps, etc.

What are the benefits of Colortrac CIS scanning technology?

SmartLF CIS (contact image sensor) technology captures **the finest image detail** in technical documents and maps.

SmartLF Ci 40 wide format scanners use the latest CIS technology to provide similar but better value performance benefits - scan speed, image quality, resolution and image width - to traditional CCD (charge couple device) scanners.

SmartLF Ci 40 scanners use 600dpi CIS sensors to give high resolving power and higher geometric accuracy than CCD technology. Resolving power measures how well the scanner sees thin lines and edges; geometric accuracy is a measure of the spatial accuracy of the image compared to the original document.

If you need the best possible black & white or color reproduction in terms of line definition and accuracy in technical documents, (such as AEC / CAD drawings, maps etc), then a SmartLF CIS scanner is the "smart" choice.

SmartLF Ci 40's use of CIS sensors and LED lighting for instant-on illumination make it compact and lightweight. If you want to be mobile and switch on and start scanning immediately, SmartLF CIS technology will allow you to do this.

The new SmartLF Ci 40 series provides exceptional monochrome performance with very sharp, clean black & white images; excellent greyscale reproduction; attractive color reproduction and high scan speeds suitable for all needs.

Software

SmartLF All-in-One (included)

Easy to use scanning and copying software designed for nonspecialists. It includes all essential functions such as scan to file (PDF, TIFF, JPG) and scan to copy (any Windows printer).

ScanWorks (optional)

Powerful scan to file software with a unique "scan-it-once" ability to ensure that top quality scanned images are produced in the least amount of time.

ScanWorks requires a minimum of scanner activity as **ALL** image adjustment can be made from just one scan of the document. This gives you the fastest workflow and productivity in technical document scanning today. Its interactive adaptive thresholding for flexible real-time image restoration and enhancement is "a joy.... provides the best results." (Cadalyt April 2007)

CopySmart (optional)

Simple to use but advanced professional scan to copy software with dedicated Colortrac printer driver support for market leading printers.

CopySmart gives high definition color scan and print productivity. Its color and paper management controls include quick and simple user ICC profiling, color adjustment, image cropping, paper economy and predictable copy sizing to ensure economic, professional quality color copies every time.

ISIS driver (free on request)

Industry standard scanner interface for enterprise EDC/EDM scan systems.

CLASP software (optional)

(Colortrac Approved Software Products). Third party software from leading independent software vendors.



Universal Repro Stand with PC / flat screen mounting.

Universal Repro Stand

A floor stand for use with popular large format printers. The scanner is held above the printer to minimize the combined footprint and create a practical scan-to-copy workstation.

Scanner accessories



Floor stand with paper catch basket

Floor stand

Minimizes the installed footprint of the scanner and positions the document feed at a comfortable and convenient height for most users to work at.

Paper catch basket

For floor stand. Catches scanned documents as they are ejected from the rear of the scanner and retains them in a holder for easy collection later.

PC / flat screen mounting

For floor stand. Combines a SmartLF scanner with a PC, screen and keyboard to create a self-contained and practical scanning workstation.



There are three SmartLF Ci 40 high definition large format scanner models with performance levels and features optimized for different applications. If your requirements change, the m and c models can be upgraded at your premises quickly and easily using our simple scanner upgrade process via email.

● standard ○ optional - not supported

Feature	SmartLF Ci 40 wide format scanner model:	m	c	e
Maximum image width	40in (101.6cm) Image length: not limited by scanner	●	●	●
Maximum media width	42in (106.7cm) Thickness: 0.012in (0.3mm)	●	●	●
Scan speeds ¹ in/sec	24-bit RGB color @ 200dpi ² 8-bit grayscale & monochrome @ 200dpi ²	- 10.00	0.83 10.00	3.33 10.00
Scan accuracy ³	+/-0.1% +/-1 pixel	●	●	●
Optical resolution	Dots per inch (dpi)	600	600	600
Extended resolution ⁴	Linear interpolation from 100 to 9600dpi in 1 dpi steps	9600	9600	9600
Scan modes	16.7 million color RGB (24-bit) 256 & 16 color RGB adaptive indexed color palette (8-bit & 4-bit) ⁵ 256 level grayscale (8-bit) Black & White (1-bit)	- - ● ●	● ● ● ●	● ● ● ●
Digital image processing (Colortrac software options provide a comprehensive range of 'post scan' image processing filters and tools)	2D Intelligent Adaptive Thresholding (IAT) (1-bit mode) Fixed Threshold Black & White (1-bit mode) Dynamic Normalization Application (DNA) with 16-bit super sampling	● ● ●	● ● ●	● ● ●
Color space	Normalized / linearized RAW RGB or sRGB	-	●	●
Color image processing	Gamma, brightness, black & white point adjustment	-	●	●
Advanced Single Roller Paper Transport (ASRPT)	Single large diameter precision ground drive roller Adaptive CIS media focus management & media guide mechanism Intuitive face up, front loading & front exit media path with side or center justification Automatic media size detection with reliable optical media sensors	● ● ● ●	● ● ● ●	● ● ● ●
All digital image sensor technology	5 x Contact Image Sensors (CIS) each with 5,000 pixels 48-bit RGB color image capture 16-bit grayscale image capture Panchromatic monochrome and black & white	● - ● ●	● ● ● ●	● ● ● ●
Light source (in CIS)	Dual 2D extra long-life LED light system for optimum object illumination and instant-on scanning capability	●	●	●
Optics (in CIS)	Solid state fiber optic rod lens with 1:1 object sensor magnification	●	●	●
User status & one touch operation	Center mounted LCD scanner control panel provides easy walk up operation and user selection of scanner mode with stop, forward, rewind, scan & copy buttons User selectable IP address, local language options and panel overlay ⁶	● ●	● ●	● ●
Scanner maintenance	Customer installable, plug 'n' play scanner Precision media calibration with DNA 16-bit super sampled data Automatic digital stitch adjustment / Easy access for cleaning	● ● ●	● ● ●	● ● ●
SmartLF All-in-One software (included)	Scan_to_file with real-time image viewer Scan_to_copy with real-time image viewer Scan_to_email with real-time image viewer Drivers, TIFF, JPEG, PNG, PDF file formats	● ● ● ●	● ● ● ●	● ● ● ●
Interface (included)	Gigabit ethernet (2m) & USB2 (2m) data cables / local power cable Windows Image Acquisition (WIA) / Still Image Interface (STI) ⁷	● ●	● ●	● ●
Dimensions & weight	48.5in wide x 8in high x 10.6in deep (123.2 x 20.1 x 27cm) 49Lbs (22kg)	●	●	●
Power requirements & consumption	External power supply 100-250VAC autosensing +/-10%, 50-60Hz Scanner power consumption 40Wh (scanning) 4.2Wh (standby)	●	●	●
Environmental impact	ENERGY STAR and RoHS compliant	●	●	●
Operating conditions	10°C - 35°C, 35% - 80% RH non-condensing	●	●	●
Scan software	ScanWorks ~ professional scan_to_archive & post scan image processing	○	○	○
Copy software	CopySmart ~ professional scan_to_print with IT8 color matching	○	○	○
EDC software	ISIS™ driver ~ connect seamlessly to EDM systems & database	○	○	○
Scanner accessories	Floor Stand 32.3in high x 21.7in deep (82 x 55cm) 29Lbs (13kg) Paper Catch Basket (floor stand is required) PC & Flat screen mounting kit (floor stand is required) Universal Repro Stand + adapter with PC & Flat screen mounting kit 75in wide x 63in high (MAX incl. scanner) x 29in deep (189 X 160 x 74cm) 113Lbs (51kg), max permissible printer height 49in (125cm)	○ ○ ○ ○ ○	○ ○ ○ ○ ○	○ ○ ○ ○ ○

[1] The scan rate is proportional across the full range of resolutions supported by the scanner. Actual scan times will depend on the host system performance. Quoted top speeds may be limited by the effective bandwidth of the USB2 or ethernet if and are not guaranteed for all media types. [2] Turbo Mode speeds can be twice as fast as regular non-turbo speed ratings but offer virtually no image quality gains over scans made at half the quoted resolution. Turbo mode scanning uses digital software interpolation to double the resolution in the paper scan direction to simulate higher resolution scanning. [3] The achieved scan accuracy may vary depending on the operating environment and the type & thickness of media. Colortrac measures accuracy by scanning a paper original printed with a 68.58cm (27in) square target. The pixel co-ordinates of the corner points of the target image are measured and compared with the known dimensions of the original. SmartLF Ci scanners are tested at 20°C +/- 3°C, 60% +/- 10% RH non-condensing. [4] The maximum resolution & size selectable for an image is limited by the file format specified, the available disk space & the computer operating system. [5] 16 color RGB (4-bit) adaptive indexed palette images are a feature of the optional Colortrac ScanWorks software. [6] Languages supported: Arabic, Chinese (Traditional), English, French, German, Italian, Japanese, Korean, Portuguese, Russian, Spanish. [7] Microsoft WIA / STI is specified for the USB interface only. [Colortrac recommends Intel Pentium, Core Duo, Core 2 Duo, HT (Hyper-Threading) and AMD Athlon Dual Core processors, at least 1GB RAM, Gigabit ethernet, USB2 and Windows™ XP Home, Windows™ XP Professional or Windows™ Vista operating systems. SmartLF drivers support 32-bit and 64-bit processor architectures. Contact your supplier for advice on the optimum system configuration for your application.] Colortrac SmartLF Ci 40 scanners comply with ENERGY STAR, CB, CE, FCC, UL and RoHS standards and regulations. Colortrac Ltd makes no warranty of any kind with respect to the information contained in this document and reserves the right to change specifications without notice. Colortrac and Smart LF® are trademarks of Colortrac Ltd. All other trademarks are the property of their respective owners. Copyright © 2009 Colortrac Ltd. Colortrac SmartLF wide format scanners are designed and manufactured by Colortrac Ltd.

SmartLF Ci 40

Professional SmartLF Scanning Solutions for ARCHITECTS | ENGINEERS | CONSTRUCTION | GIS | BUILDING SERVICES | FACILITIES MANAGEMENT | TECHNICAL & CAD DRAWING OFFICES

**Because you need large format scanning solutions that work for you:**

- ▶ The Ci 40 includes straightforward SmartLF All-in-One Scan and Copy software
 - ▶ Combines wide format scanning and copying in a single easy to use program
 - ▶ Has full compatibility with wide format printers through standard Windows drivers
- ▶ The acclaimed^{*} ScanWorks professional productivity scanning software is an optional extra
 - ▶ Uses "the best"^{**} Intelligent Adaptive Thresholding to enhance/restore drawing detail
 - ▶ Its unique one-step scan process is simply the fastest, most productive way to scan



Specification	Ci 40m mono/grayscale	Ci 40c +Color	Ci 40e +Express Color
UPGRADEABLE	To Ci 40c or Ci 40e	To Ci 40e	N/A
OPTICAL RESOLUTION	600 dpi	600 dpi	600 dpi
INTERPOLATED RESOLUTION	9600 dpi	9600 dpi	9600 dpi
MAX SCAN WIDTH	40" (101.6 cm)	40" (101.6 cm)	40" (101.6 cm)
MAX MEDIA WIDTH	42" (106.7 cm)	42" (106.7 cm)	42" (106.7 cm)
MAX MEDIA THICKNESS	0.012" (0.3 mm)	0.012" (0.3 mm)	0.012" (0.3 mm)
ACCURACY	+/-0.1% +/-1 pixel	+/-0.1% +/-1 pixel	+/-0.1% +/-1 pixel
DATA CAPTURE (COLOR/GRAYSCALE)	16-bit	48-bit/16-bit	48-bit/16-bit
COLOR SPACE		RAW RGB/sRGB	RAW RGB/sRGB
SCAN SPEED 1-BIT MONO (in/sec) @200 dpi	10.00	10.00	10.00
SCAN SPEED 24-BIT COLOR (in/sec) @200 dpi	N/A	0.83	3.33
PAPER PATH		Face-up, front entry, front exit	
INTERFACE		High Speed USB 2.0/Gigabit Ethernet - network ready	
POWER REQUIREMENTS		External power supply 100~250 VAC autosensing +/-10% Less than 40VA (scanning) 4.2 VA (standby)	
WEIGHT & DIMENSIONS (WxHxD)		49lbs (22 kg)	48.5 x 8 x 10.6" (123.2 x 20.1 x 27 cm)
HOST PLATFORM		Windows XP, Windows Vista -32-bit and 64-bit architectures	
CERTIFICATIONS		CB, CE, FCC, UL, RoHS. ENERGY STAR [®] .	
INCLUDED SOFTWARE	SmartLF All-in-One scan and copy software -supports TIFF, JPEG, PNG & PDF; WIA/STI interface.		
OPTIONAL SOFTWARE	ScanWorks -industry leading scanning software; CopySmart professional scan-to-copy software.		

^{**}"a joy.... provides the best results" Cadalyst (April 2007)

[1] The scan rate is proportional across the full range of resolutions supported by the scanner. Actual scan times will depend on the host system performance. Quoted top speeds maybe limited by the effective bandwidth of the USB2 or ethernet i/f and are not guaranteed for all media types. [2] Turbo Mode speeds can be twice as fast as regular non-turbo speed ratings but offer virtually no image quality gains over scans made at half the quoted resolution. Turbo mode scanning uses digital software interpolation to double the resolution in the paper scan direction to simulate higher resolution scanning. [3] The achieved scan accuracy may vary depending on the operating environment and the type & thickness of media. Colortrac measures accuracy by scanning a paper original printed with a 68.58cm (27in) square target. The pixel co-ordinates of the corner points of the target image are measured and compared with the known dimensions of the original. SmartLF Ci 40 scanners are tested at 20°C +/- 3°C, 60% +/- 10% RH non-condensing. [4] The maximum resolution & size selectable for an image is limited by the file format specified, the available disk space & the computer operating system. [5] 16 colour RGB (4-bit) adaptive indexed palette images are a feature of the optional Colortrac ScanWorks software. [6] Languages supported: English, Arabic, Chinese (Mandarin), Japanese, Korean, Portuguese, French, German, Italian, Russian, Spanish. [7] Microsoft WIA / STI is specified for the USB interface only. [Colortrac recommends Intel Pentium, Core Duo, Core 2 Duo, HT (Hyper-Threading) and AMD Athlon Dual Core processors, at least 1GB RAM, Gigabit ethernet, USB2 and Windows XP Home, Windows XP Professional or Windows Vista operating systems. SmartLF drivers support 32-bit and 64-bit processor architectures. Contact your supplier for advice on the optimum system configuration for your application.] [Colortrac SmartLF Ci 40 scanners are ENERGY STAR[®] qualified and comply with CB, CE, FCC, UL and RoHS standards and regulations.] Colortrac Ltd makes no warranty of any kind with respect to the information contained in this document and reserves the right to change specifications without notice. Colortrac and Smart LF[®] are trademarks of Colortrac Ltd. All other trademarks are the property of their respective owners. Copyright © 2009 Colortrac Ltd. COLORTRAC SMARTLF WIDE FORMAT SCANNERS ARE DESIGNED AND MANUFACTURED BY COLORTRAC.

COLORTRAC LIMITED
COLORTRAC HQ AND FACTORY
3-5 Brunel Court
Burrell Road
St Ives, Cambs
PE27 3LW, UK
Tel: +44 1480 464618
Fax: +44 1480 464620
info@colortrac.com

COLORTRAC INC
17301 West Colfax Avenue
Suite 165
Golden, Colorado 80401
USA
Tel: +1 303 973 6722
Fax: +1 303 973 7092

COLORTRAC LTD BEIJING
Room 4-B1B, Building No. 7, Section 3, Century City
HaiDian District, Beijing 100089, P.R. China
Tel: +86 1051 988928 Fax: +86 1051 988927

www.colortrac.com



Colortrac
Our Business is Your Image